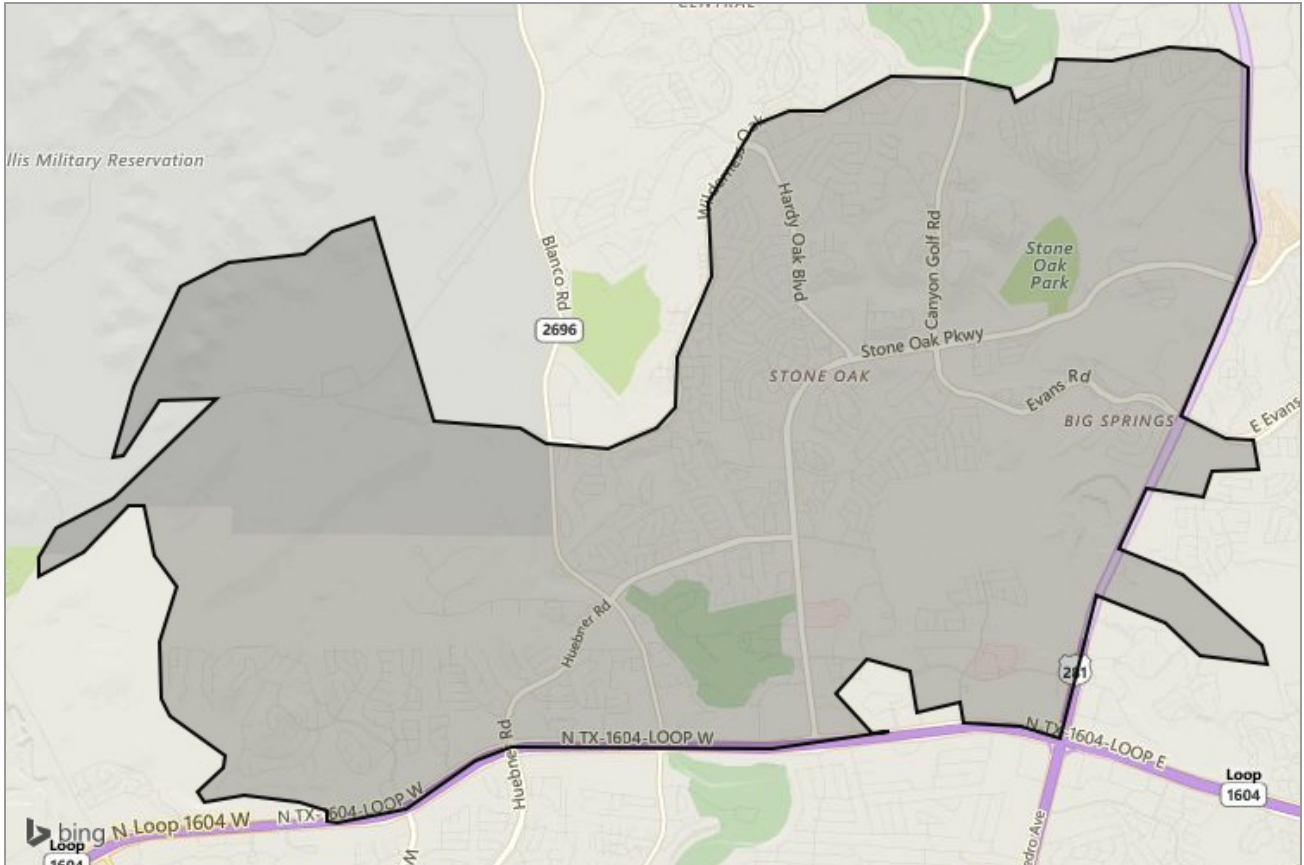




NEIGHBORHOOD REPORT

# San Antonio, TX 78258



Presented by

**Noah Ballard**

Texas Real Estate License: 669239

Work: (210) 845-6287 | Fax: (210) 520-0290

[www.alamo-homes.com](http://www.alamo-homes.com)

**San Antonio's Finest Realty**

5739 Callaghan Rd  
San Antonio, TX 78228



# Neighborhood: Housing Stats and Charts

	78258	San Antonio	Bexar County	Texas	USA
<b>Median Estimated Home Value</b>	\$321K	\$143K	\$146K	\$152K	\$319K
<b>Estimated Home Value 12-Month Change</b>	5.4%	11.8%	10.1%	7.5%	—
<b>Median List Price</b>	\$370K	\$225K	\$228K	\$248K	\$99K
<b>List Price 1-Month Change</b>	-1.4%	0%	1.1%	1.2%	0.2%
<b>List Price 12-Month Change</b>	5.7%	9.8%	8.3%	12.7%	2.6%
<b>Median Home Age</b>	15	38	36	34	—
<b>Own</b>	68%	55%	59%	63%	64%
<b>Rent</b>	32%	45%	41%	37%	36%
<b>\$ Value of All Buildings for which Permits Were Issued</b>	—	—	\$652M	\$13.7B	\$102B
<b>% Change in Permits for All Buildings</b>	—	—	-12%	0%	2%
<b>% Change in \$ Value for All Buildings</b>	—	—	-2%	10%	7%

## Median Sales Price vs. Sales Volume

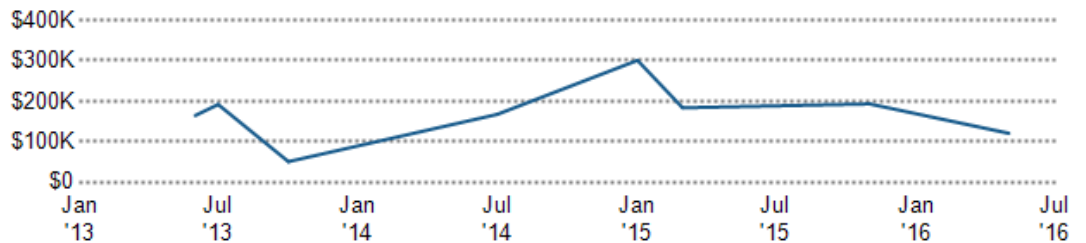
This chart compares the price trend and sales volume for homes in an area. Home prices typically follow sales volume, with a time lag, since sales activity is the driver behind price movements.

Data Source: Public records data

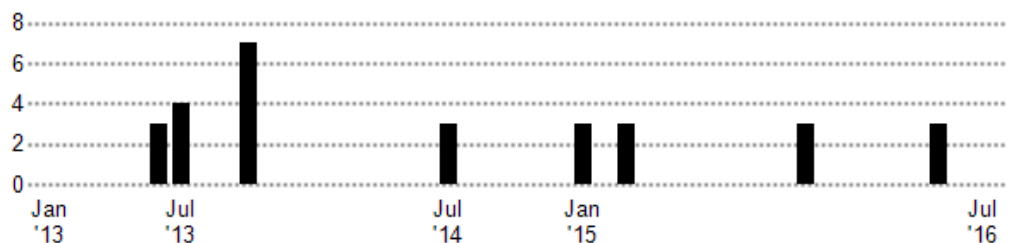
Update Frequency: Monthly

- Median Sales Price
- Sales Volume

Median Sales Price



Sales Volume





## Median Listing Price vs. Listing Volume

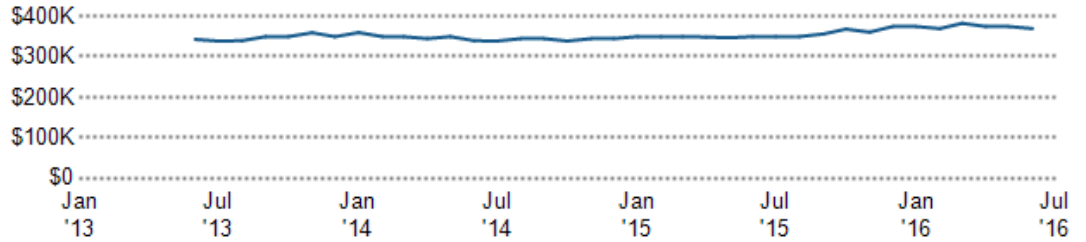
This chart compares the listing price and listing volume for homes in an area. Listing prices often follow listing volume, with a time lag, because supply can drive price movements.

Data Source: On- and off-market listings sources

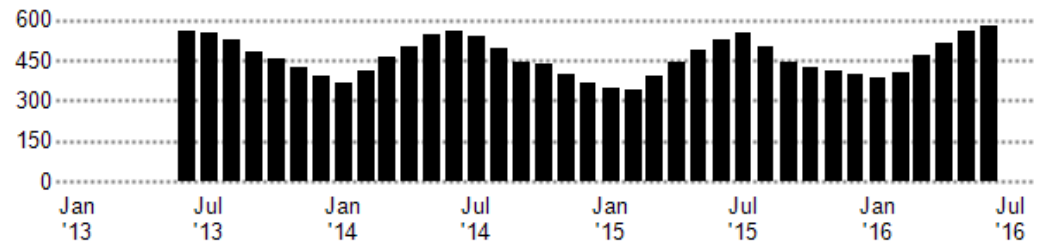
Update Frequency: Monthly

■ Median List Price  
■ Listing Volume

### Median List Price



### Listing Volume



## Price Range of Homes Sold

This chart shows the distribution of homes reported sold in the past six months within different price ranges in the area of your search. The amount shown for the subject property is sold data where available, or the property's estimated value when sales data are unavailable (such as a non-disclosure state) or provided in range format.

Data Source: Public records data

Update Frequency: Monthly

■ Sales Count By Price Range



## Price per Square Foot of Homes Sold

This chart shows the distribution of homes reported sold in the past six months at different prices per square foot in the area of your search.

Data Source: Public records data

Update Frequency: Monthly

■ Sales Count By Price Per Sq Ft





## Size of Homes Sold

This chart shows the distribution of homes reported sold in the past six months of different sizes in the area of your search.

Data Source: Public records data

Update Frequency: Monthly



■ Sales Count By Living Area

## Age Range of Homes Sold

This chart shows the distribution of homes reported sold in the past six months of different age ranges in the area of your search.

Data Source: Public records data

Update Frequency: Monthly



■ Sales Count by Age of House

## Number of Bedrooms in Homes Sold

This chart shows the distribution of homes reported sold in the past six months, according to the number of bedrooms, in the area of your search.

Data Source: Public records data

Update Frequency: Monthly



■ Sales Count by Bedroom



# Neighborhood: People Stats and Charts

	78258	San Antonio	Bexar County	Texas	USA
Population	43K	1.39M	1.79M	26.1M	314M
Population Density per Sq Mi	2.66K	3.01K	1.44K	100	—
Population Change since 2000	220.1%	21%	28.4%	25.1%	11.6%
Median Age	34	33	33	34	37
Male / Female Ratio	49%	49%	49%	50%	49%
High School Graduate	10%	26%	25%	25%	28%
2-Year Degree	25%	31%	31%	29%	29%
Bachelor Degree	38%	16%	17%	18%	18%
Post-graduate Degree	25%	9%	10%	9%	11%

## Population of Children by Age Group

This chart shows the distribution of the population of children by age range — from birth to 17 — in the area of your search.

Data Source: U.S. Census

Update Frequency: Annually

78258



## Population of Adults by Age Group

This chart shows the distribution of the population of adults by age range — from 18 to 75-plus — in the area of your search.

Data Source: U.S. Census

Update Frequency: Annually

78258



## Households With Children

This chart shows the distribution of households with children, categorized by marital status, in the area of your search.

Data Source: U.S. Census

Update Frequency: Annually

78258





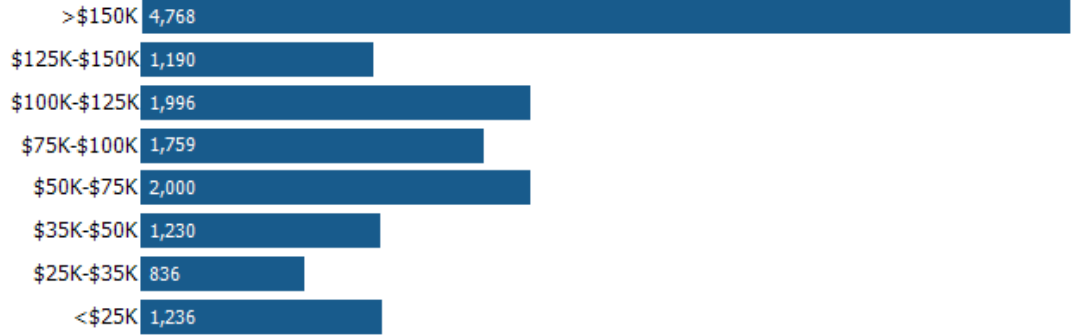
## Household Income Brackets

This chart shows annual household income levels within an area.

Data Source: U.S. Census

Update Frequency: Annually

78258



## Presidential Voting Pattern

This chart shows how residents of a county voted in the 2014 presidential election.

Data Source: USElectionAtlas.org

Update Frequency: Annually





# Neighborhood: Economic Stats and Charts

	78258	San Antonio	Bexar County	Texas	USA
Income Per Capita	\$46,936	\$22,784	\$24,525	\$26,513	\$28,555
Median Household Income	\$105,592	\$46,317	\$50,867	\$52,576	\$53,482
Unemployment Rate	–	3.2%	3.4%	4.2%	4.7%
Unemployment Number	–	22.2K	30.1K	559K	7.44M
Employment Number	–	669K	864K	12.7M	151M
Labor Force Number	–	691K	894K	13.3M	158M

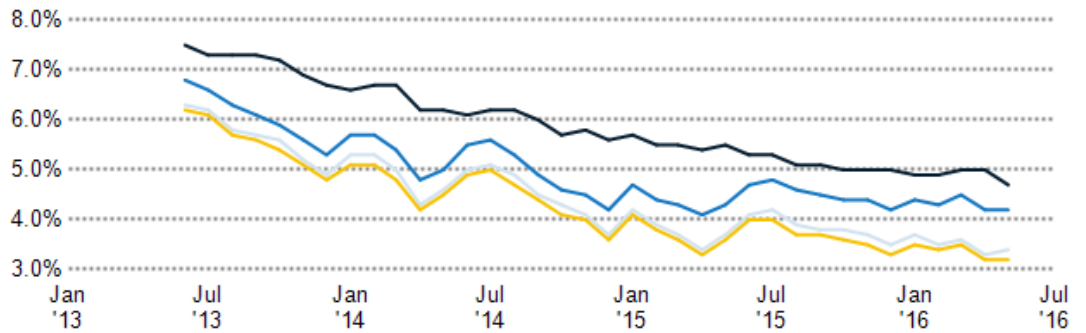
## Unemployment Rate

This chart shows the unemployment trend in the area of your search. The unemployment rate is an important driver behind the housing market.

Data Source: Bureau of Labor Statistics

Update Frequency: Monthly

- San Antonio
- Bexar County
- Texas
- USA



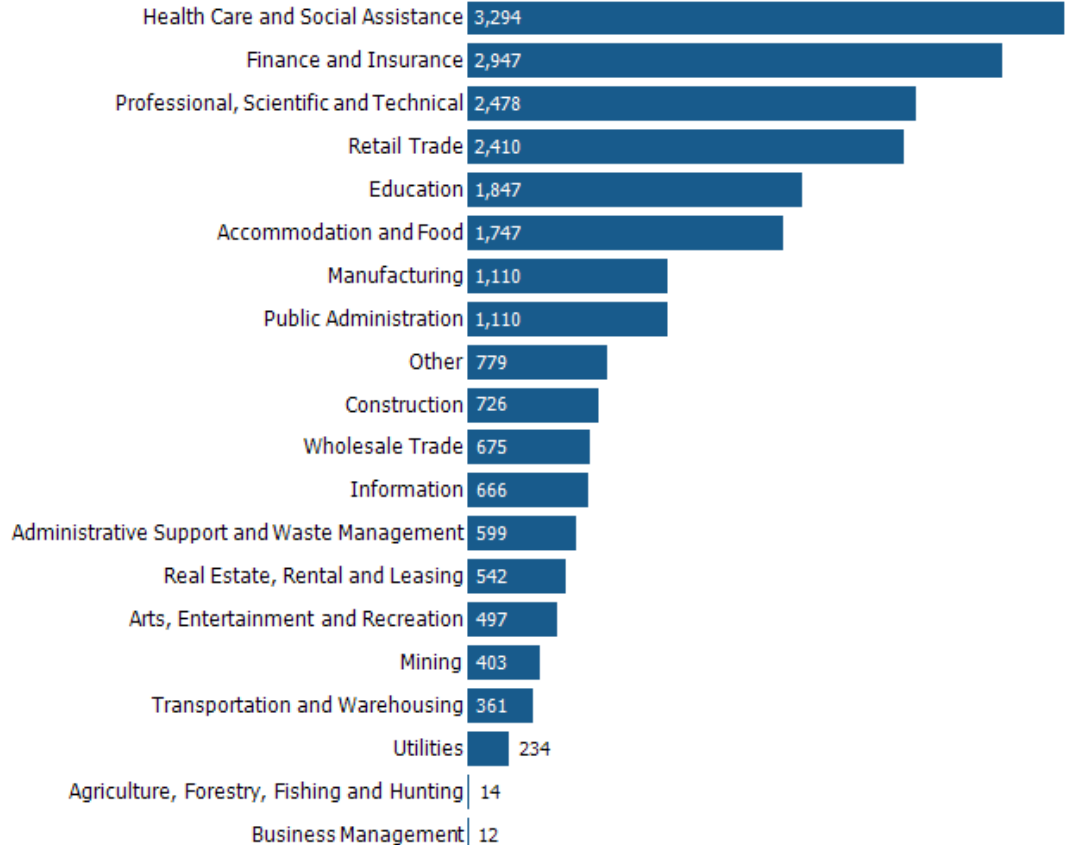
## Occupational Categories

This chart shows categories of employment within an area.

Data Source: U.S. Census

Update Frequency: Annually

- 78258





## Neighborhood: Quality of Life Stats and Charts

### Quality of Life in 78258

	78258	San Antonio	Bexar County	Texas	USA
Elevation (in feet)	731	731	731	-	-
Annual Rainfall (in inches)	35.01	31.56	30.55	28.2	-
Annual Snowfall (in inches)	1.55	1.55	1.55	3.41	-
Days of Full Sun (per year)	104	105	109	127	-
Travel Time to Work (in minutes)	-	23	24	25	26
Water Quality - Health Violations	-	-	0	-	-
Water Quality - Monitoring and Report Violations	-	-	1.8	-	-
Superfund Sites	0	1	2	66	2,302
Brownfield Sites	No	Yes	Yes	Yes	Yes

### Average Commute Time

This chart shows average commute times to work, in minutes, by percentage of an area's population.

Data Source: U.S. Census

Update Frequency: Annually

78258



### How People Get to Work

This chart shows the types of transportation that residents of the area you searched use for their commute.

Data Source: U.S. Census

Update Frequency: Annually



### Average Monthly Temperature

This chart shows average temperatures in the area you searched.

Data Source: NOAA

Update Frequency: Annually







## Walkability Scores (out of 5)

This neighborhood or ZIP code is rated for walking access to general points of interest, reflected in the overall score, plus amenities (such as retail stores) and leisure (such as restaurants and parks). Other factors considered in the scores are street types, weather, public transportation and population density.

Data Source: Maponics

Update Frequency: Quarterly

Overall Score



Amenity Score



Leisure Score

